

DRC

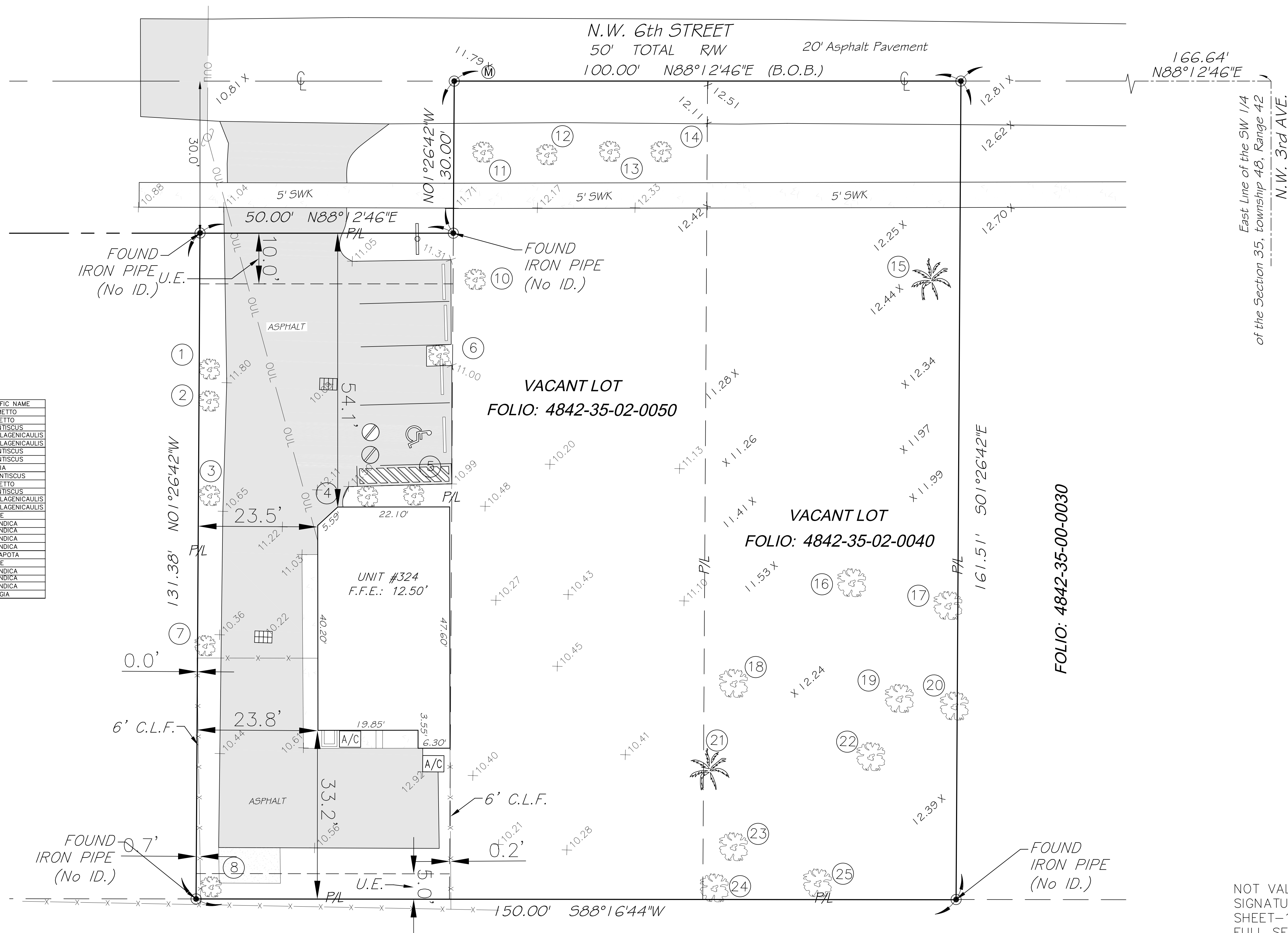
PZ22-12000032  
10/16/2024

**WIZCAYA SURVEYING  
AND MAPPING, INC.**

LB#8000

13217 S.W. 46th LANE, MIAMI, FL  
PH:(786)413-5822

LYING AND BEING IN THE CITY OF FLORIDA CITY, MIAMI DADE COUNTY , FLORIDA



| #  | DIAMETER | HEIGHT | CANOPY | COMMON NAME        | SCIENTIFIC NAME         |
|----|----------|--------|--------|--------------------|-------------------------|
| 1  | 1.4'     | 15'    | 12'    | CABBAGE PALM       | SABAL PALMETTO          |
| 2  | 1.3'     | 15'    | 12'    | CABBAGE PALM       | SABAL PALMETTO          |
| 3  | 0.5'     | 15'    | 10'    | MASTIC             | PISTACIA LENTISCUS      |
| 4  | 1.5'     | 15'    | 5'     | BOTTLE PALM        | HYOPHORBE LAGENICHAULIS |
| 5  | 1'       | 15'    | 5'     | BOTTLE PALM        | HYOPHORBE LAGENICHAULIS |
| 6  | 1'       | 30'    | 15'    | MASTIC             | PISTACIA LENTISCUS      |
| 7  | 0.7'     | 20'    | 18'    | MASTIC             | PISTACIA LENTISCUS      |
| 8  | 2.3'     | 45'    | 50'    | ROYAL POINCIANA    | DELONIX REGIA           |
| 10 | 0.4'     | 15'    | MASTIC | PISTACIA LENTISCUS |                         |
| 11 | 0.35'    | 20'    | 8'     | ROYAL PALM         | SABAL PALMETTO          |
| 12 | 0.4'     | 25'    | 12'    | MASTIC             | PISTACIA LENTISCUS      |
| 13 | 0.9'     | 40'    | 8'     | ROYAL PALM         | HYOPHORBE LAGENICHAULIS |
| 14 | 0.5'     | 20'    | 8'     | ROYAL PALM         | HYOPHORBE LAGENICHAULIS |
| 15 | 0.7'     | 10'    | 5'     | ARECAEAE           |                         |
| 16 | 0.7'     | 10'    | 15'    | MANGO              | MANGIFERA INDICA        |
| 17 | 2'       | 15'    | 10'    | MANGO              | MANGIFERA INDICA        |
| 18 | 3'       | 20'    | 10'    | MANGO              | MANGIFERA INDICA        |
| 19 | 2'       | 15'    | 10'    | MANGO              | MANGIFERA INDICA        |
| 20 | 3'       | 20'    | 15'    | SAPODILLA          | MANIKARA ZAPOTA         |
| 21 | 0.7'     | 10'    | 5'     | PALM               | ARECAEAE                |
| 22 | 2'       | 15'    | 10'    | MANGO              | MANGIFERA INDICA        |
| 23 | 3'       | 20'    | 15'    | MANGO              | MANGIFERA INDICA        |
| 24 | 2'       | 15'    | 10'    | MANGO              | MANGIFERA INDICA        |
| 25 | 1.4'     | 15'    | 10'    | ROYAL POINCIANA    | DELONIX REGIA           |

[illegible]

4842-35-02-0050  
02-0040

484Z  
TENTATIVE PI AT

3324 NW 6 St Pompano Beach, FL 33060

SCALE: AS-SHOWN

DRAWN BY: J.L.

CHECKED BY: A.T

SET #: TENTATIVE OF PLAT

DATE: 06-01-2002

PROJECT No:



SHEET:

1



20

2000032

2022

2023

NOT VALID WITHOUT YOUR  
SIGNATURE ON  
SHEET-1 AND THE  
FULL SET INCLUDING  
SHEET 1, 2, AND 3.

PZ22-12000032  
07/19/2023